



Guide to Devon's Woodland and Natural Burial Sites



Devon natural burial sites

There are eleven woodland and natural burial sites in Devon
(in order of appearance in this document).

Approximate cost (as of May 2014)
including grave preparation

Bidwell Woodland Burial at Rattery, near Totnes	£ 820
Sharpham Meadow near Totnes	£1380
Conquerors Wood at Cockington, near Torquay	£1200
Crossways at Cheriton Bishop	£ 850
Exwick Natural Burial at Exwick Cemetery, Exeter*	£ 800
Great Bradley Cottage at Templeton, near Tiverton	£ 500
Yealmpton Woodland Burial at Yealmpton, near Plymouth	£ 900
Dartmouth Natural Burial at Longcross Cemetery*	£ 550
Mole Valley Woodland Burial at Queen's Nympton, nr South Molton	£ 800
Seaton Natural Burial at Seaton Cemetery*	£ 650
Beer Cross Woodland Burial near Sampford Courtney	£ 950

* a designated part of an existing council owned cemetery

To book a burial at any of these sites please call Heart & Soul Funerals on 01803 840779

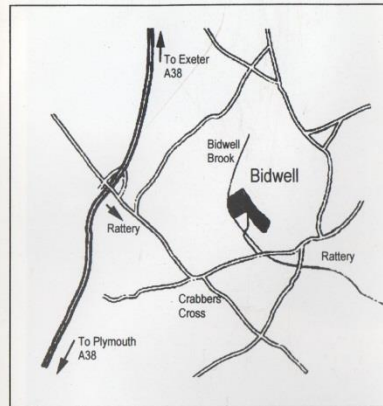
Site Details

Burials are spaced between existing trees - allowing about 10 square metres (over 10 square yards) per burial.

A grave site costs £500. (Plus digging services as required). Plots can be paid for in advance or paid for as part of a prepaid funeral with a Funeral Director or Celebrant. While the use of Funeral Directors or Celebrants is normal, it is not required. It is best to use the services of those you know and are comfortable with. Some assistance and information can be given in this regard.

Only biodegradable coffins or shrouds are allowed. Each grave has its location recorded, so each grave can with time meld into the landscape. The trees are already planted; however planting woodland wildflowers is encouraged and they thrive in this area.

Whilst access is normally freely available, some short restrictions may occur during forestry work.



Bidwell Woodland Burial Site is close to the village of Rattery and within easy reach of the A38, midway between Plymouth and Exeter and near to Dartington and South Brent.

For further information contact

Andrew Lithgow

Tel: 07973 459065

email andrew@bidwellwoodland.co.uk

www.bidwellwoodland.co.uk

or

GREEN FUSE

Tel: 01803 840779

7 High Street, Totnes TQ9 5NN

email greenfuse@lineone.net.co.uk

BIDWELL



WOODLAND BURIAL SITE

CLIMMINGS POND LANE
RATTERY
DEVON
TQ10 9LU

Bidwell is a beautiful, wild and informal site surrounded by mature woodland. To reach the burial plots you walk down over a brook, where there is a huge oak tree under which ceremonies can be held. You then walk up the hill to the graves. The coffin can be put on a handcart and everyone can help to take it up there. The site is managed by its owner, Andrew Lithgow. The graves are between lines of trees, now about ten years old. Eventually these trees will be harvested and new lines planted, and new graves put between those. There is a big poly tunnel near where you park, but you can't see this from the top. You can have a native tree planted or put native shrubs on the grave. Small grave plaques are allowed.



Just a nice place to remember
saying some goodbyes



Being buried in a woodland is not just a romantic idea, it is practical. Its also a tradition encompassed in law going back thousands of years.

Woodland burial is the most environmentally friendly way of returning the body to the earth. In fact a 'last gift to nature'.

Bidwell is not a reserve but rather a continuation of the practice of the 'cycle of life' and 'return to nature'. The site will be undisturbed to allow our bodies to return naturally to the soil within a perpetual and sustainable woodland.

This wood, as well as the surrounding woods and grazing land is rich with typical Devon wildflowers and herbs which provide year-round displays.

More about Bidwell Woodland burial

Sharpham Meadow - a new natural burial site just outside Totnes

Sharpham Meadow Burial Ground

Sharpham Meadow is a new natural burial ground a few miles outside Totnes on the edge of the Sharpham Estate. Situated at the top of the hill it has stunning views over the River Dart. Small grave markers will be allowed, and the site will be managed as meadowland. Lots of wild flower seeds have been scattered. With plenty of parking, a fire circle and a planned structure to keep you out of the wind, it is beautiful place for a natural burial. The cost is £1400 for a prepared plot. For further details about the Sharpham Meadow burial site please call green fuse on 01803 840779.





TORBAY
COAST AND
COUNTRYSIDE
TRUST

Cockington Woodland Burial Site

COCKINGTON WOODLAND BURIAL SITE

Set in Cockington Country Park on the edge of Torquay, Torbay's only Woodland Burial site offers a natural alternative to traditional burial. The site is part of Conqueror Wood, an 18 acre woodland planted in 2005 to celebrate the Battle of Trafalgar 200 celebrations.

Conqueror Wood enjoys fantastic views over the whole of Torbay, and is easy to get to, situated just off the Torbay ring road. Open glades, paths and rides with views of the sea are part of the woodland, which is planted with oak, ash, hazel and maple and shrubs.

The Woodland Burial site offers a natural way to remember loved ones. For each burial, a tree will be planted nearby, adding to the newly-planted woodland and each plot will be marked with a memorial plaque. Within the burial ground, there is space for single and double depth burials and for the burial of ashes. Each plot is marked with a granite memorial plaque, set into the ground. Long grass will encourage birds such as the rare Cirl bunting, insects and wildflowers.

The cost of each burial includes a donation to Torbay Coast and Countryside Trust, playing a vital role helping to keep Torbay special.

For details of arranging a burial or reserving a plot, contact Torbay Coast and Countryside Trust.

Torbay Coast and Countryside Trust
Cockington Court
Torquay
TQ2 6XA
01803 606035

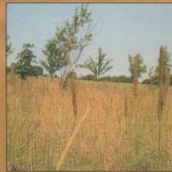
www.countryside-trust.org.uk
Registered Charity No 1077561



Cockington Woodland burial at Conquerors Wood is part of the Torbay Coast and Countryside Trust. Set up high on the hill, it has fantastic views of Torbay. The site is just on the big ring road, and so has some traffic noise and is open to dog walkers. The trees are young, but there are some more mature ones around the site. It is quite tightly managed - you can only have their standard memorial plaques, no shrubs or plants can be planted, and no flowers left on the grave.

Crossways Woodland Burials

Nestling in the heart of the Devonshire countryside, is positioned in one of the most beautiful settings in England.



For further details on Crossways Woodland Burials or to reserve a plot please contact Martin or Julie Chatfield
Crossways Farm, Cheriton Bishop, Exeter, Devon, EX6 6SD
Tel: 01647 24382 • Email: info@crosswayswoodlandburials.co.uk
Web: www.crosswayswoodlandburials.co.uk

Crossways Woodland Burial at Cheriton Bishop is within easy reach of Exeter. It is a lovely site with views of Dartmoor, sensitively managed by its owners Martin and June Chatfield. The trees are young and therefore it still looks a bit sparse. It has a log cabin for ceremonies for up to 30 people. Martin puts some raw wool in the grave, which is a nice touch. You can choose a native tree or plant native flowers or shrubs and have a small plaque.

Nestling in the heart of the Devonshire countryside



Set on a traditional working family farm and surrounded by fields and woodlands with stunning views across Dartmoor and the rolling hills of Devon, the site is approached through a quiet country lane but is just 5 minutes from the A30.



Here, local wildlife abounds and planting is designed to be in keeping with the existing surroundings and to encourage an even greater variety of local wildlife, such as birds and butterflies.

Friends and family are welcome to return anytime to visit loved ones and simply sit and enjoy the peace and tranquillity that is enjoyed at Crossways Woodland Burials.



Within the burial ground there is a specific area set aside for the internment or scattering of ashes. Here again native trees, shrubs and wild flowers will be planted to maintain the countryside.

As a member of the Association of Natural Burial Grounds, the site is protected by law. Our aim is to make the burial ground into a woodland with traditional pathways and sheltered seating areas amongst the trees and wild flowers.

No headstones will be erected but a native tree or shrub will be planted on the burial plot in the next planting season.

All denominations of faith are welcome and although the whole burial ground is not consecrated, individual plots can be if requested. We are here to help and advise with all aspects of organising the celebration of life and burial.

There are many options available for any type of service and we are more than happy to help you in any way we can, be it with information, advice or organisation. You can choose the traditional services of a vicar or family and friends can perform and organise the entire funeral themselves.



Crossways Woodland Burials



More information on Crossways

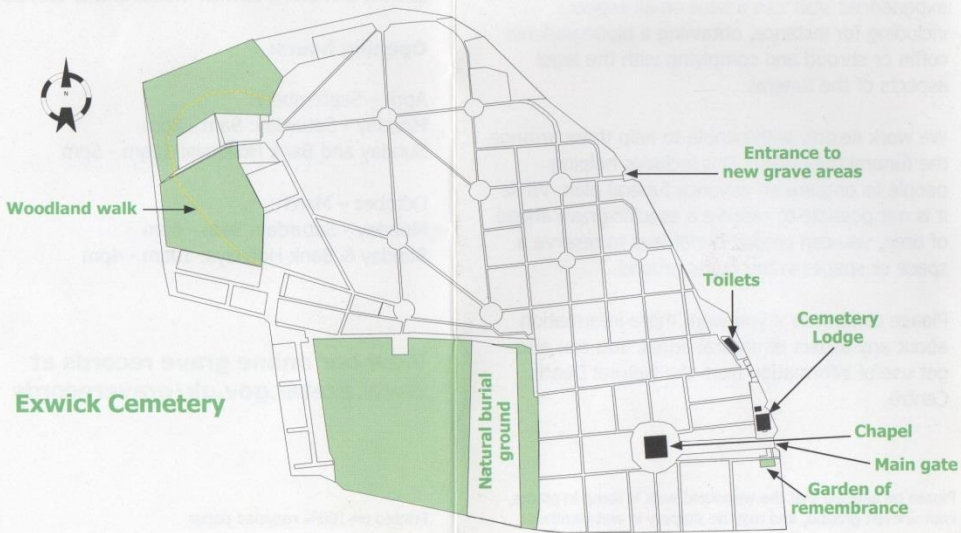
For further help or advice

If you need any further help or advice please contact:

Bereavement Services
Exeter City Council
Civic Centre
Paris Street
Exeter EX1 1RQ

Telephone: 01392 265370
Fax: 01392 265795
email: bereavement.services@exeter.gov.uk
website: www.exeter.gov.uk/bereavement

Your comments about the service we provide are always welcome



The Natural Death Centre

In The Hill House
Watley Lane
Twyford
Winchester
SO21 1QX

Tel: 0871 288 2098
email: contact@naturaldeath.org.uk
website: www.naturaldeath.org.uk

This information can be made available in large print, tape, braille or other languages on request.



Exeter City Council

Natural burial and woodland walk



Bereavement Services

Exeter City Council is a member of the Institute of Cemetery & Crematorium Management and has adopted the Charter for the Bereaved



Exwick Woodland burial is a designated corner of Exeter City's Exwick cemetery in a glade amongst mature trees. It is a small, sheltered area. No plaques or plants are allowed on the graves, so they are, effectively, unmarked. You can use the recently renovated cemetery chapel which holds about sixty people. The staff at Exeter do make a real effort to accommodate family's wishes and needs.

Natural burial and woodland walk

Set in a secluded glade surrounded by mature trees, on a hillside offering views across the city, Exwick's natural burial ground offers a tranquil and simple space for people who want an environmentally friendly burial. The woodland walk allows access to a separate area also managed for nature conservation.

The urban setting ensures good road and public transport links, reducing the environmental impact of travel. It is also a good choice for people who want a natural burial but who want a grave close to loved ones buried elsewhere in the cemetery.

Ashes can also be buried or scattered at the natural burial ground or can be scattered at the nearby woodland walk. No memorials are placed on the graves, leaving the landscape to develop naturally. There is a memorial constructed of river stones where engraved stones can be added. These are available from the memorial masons listed on our Approved Contractors leaflet. In addition, memorial trees, benches and plaques can be placed in a suitable location in the main cemetery.



Because there is no need to buy rights to the grave, natural burial is an economical option.

There is a non denominational chapel available for services and memorial events. You are free to plan the ceremony of your choice, which could mean using a minister or celebrant, an informal gathering of friends and family or something more unusual. The chapel has a small kitchen, moveable seating, facilities for playing recorded music and the use of an electronic organ. You can have the chapel the whole of the day of the funeral if you wish. Alternatively, you can have a simple graveside service.

Funerals can be arranged through a funeral director, although you are free to make whatever arrangements you feel are appropriate. Our experienced staff can advise on all aspects including for instance, obtaining a biodegradable coffin or shroud and complying with the legal aspects of the funeral.

We work flexibly with people to help them arrange the funeral they want. This includes helping people to prepare an advance funeral plan. While it is not possible to reserve a specific grave ahead of time, you can prepay burial fees to reserve a space or spaces in the burial ground.

Please contact us if you want more information about any aspect of natural burial. You can also get useful information from the Natural Death Centre.

Please be advised that the woodland walk is steep in places, with uneven ground, and may be slippery in wet weather.



Photo: Charlie Pickwood

Information on Exwick Cemetery

Address:

Exwick Cemetery, Exwick Road, Exeter EX4 2BT

Opening hours:

April – September:

Monday - Saturday: 9am - 8pm

Sunday and Bank Holidays: 10am - 5pm

October – March:

Monday - Saturday: 9am - 4pm

Sunday & Bank Holidays: 10am - 4pm

View our online grave records at
www.exeter.gov.uk/graverecords

Printed on 100% recycled paper

8/10

Users have commented:-

"If you want a natural burial in a beautiful unspoilt area with a very friendly owner, its ideal". Burlescombe.

"For an opportunity to get closer to your own feelings and further from false ritual, this is it. We particularly liked Catherine's helpful and caring nature". Hemyock.

"Beautifully done". Honiton.

"It's the most gorgeous place to be buried, next to heaven". Tiverton.

"A local pub provided excellent food for over 50 of us". Exminster.

"Mrs Hunt was efficient, helpful and respectful of our wishes". Exeter.

"Easy access and not far to walk". Funeral director.

"Catherine Hunt was wonderful. The site is one of the most beautiful, peaceful, natural places on earth". Crediton.

"The whole experience was an eye-opener on how all funerals could be managed. Excellent". North Devon.

"Lining the grave with hay was a kindly thought. We appreciated the freedom and lack of ritual". Woodbury

"Catherine was wonderfully kind and supportive throughout and did everything she promised, quietly and efficiently". Cheltenham.



Please contact:-
Mrs Catherine Hunt
Great Bradley Cottage
Calverleigh Cross
Templeton, Tiverton
Devon EX16 8BJ

Phone/fax 01884 256098

Mrs Hunt is a member of the Association of Natural Burial Grounds and abides by their code of conduct. The site will always remain a protected area.

Great Bradley Cottage Natural Burial Ground has been awarded "Best Natural Burial Ground in the South West" in the Natural Death Handbook awards 2004 and runner up in the U.K.

More information on green burials is available from:

The Natural Death Centre, 6 Blackstock
Mews, Blackstock Road, London N4 2BT
Tel: 0871 288 2098
www.naturaldeath.org.uk

In the heart of Mid Devon

GREAT BRADLEY COTTAGE



NATURAL BURIAL GROUND



Great Bradley Cottage at Templeton, near Tiverton, is owned and managed by Catherine Hunt who is an enthusiast for natural burial. A meadowland site part planted to form an orchard, the trees are young. It is another with beautiful views.



This is a one acre green burial ground which is part of a five acre hay meadow. It is a peaceful site in the beautiful Mid Devon countryside enclosed by natural hedges and has panoramic views across farmland to the hills beyond.

The hedgerows are a bit wild and untamed, with primroses, daffodils and foxgloves mixed up with honeysuckle, bramble and nettles; but this is how I would like it to remain to encourage the wildlife. Typical visitors include deer, foxes, badgers and rabbits, also buzzards, pheasants, skylarks, swallows and many other small birds.

The approach up a country lane leads to a level site with a stoned parking area. There is a small grass track around the edge of the meadow where families are welcome to wander in private with their thoughts.

Any kind of bio-degradable coffin, body bag or shroud is acceptable.

Once a burial has taken place and the ground has settled, bulbs and spring flowers such as snowdrops, primroses, daffodils and bluebells can be added by the family if they wish. A fruit tree or deciduous native tree may be planted in remembrance in the area, but not necessarily on the actual grave. Trees can be purchased separately from any nursery or a local supplier who keeps a selection in stock.

My plan is to form a small orchard with benches amongst the establishing trees where people can sit and enjoy the tranquillity.



The graves are sown with grass and a scattering of wild flower seeds collected from the meadow each year. I will always maintain the site to a high standard by tidying the graves and cutting the grass so this need not be a worry to anyone.

Families are very welcome to come at any time to visit and tend graves adding bulbs and plants over the years if they wish.

Press Release:

GREEN FIRST FOR MID DEVON

Mid Devon's first private green burial ground has been given the go-ahead by Mid Devon District Council planners to Mrs Hunt of Templeton, near Tiverton, who is establishing a natural burial ground within her hay meadow which has outstanding views across unspoilt farmland towards Dartmoor. The site is open to those who prefer to have a green burial.

"It is not a cemetery" Mrs Hunt said, "There are no upright headstones or memorials and there will be no obvious sign of a grave once the ground has settled, only a small flat stone which will be put in place as a reference point for visitors. There is no time limit at the grave side and every burial will be treated with the dignity and respect it deserves".

"I hope that families will think that this is a 'nice place' to say goodbye to their loved ones and feel that they can return at any time to sit and reflect, as memories play an important part in the grieving process".

Some people like the idea of a no memorial anonymity and seek an alternative to cremation or formal burial in a public cemetery, a few may prefer to have an independent funeral. For the broadly green and those who love the countryside in general a natural burial ground can provide many answers and solutions.



Yealmpton Woodland Burial



Yealmpton Woodland Burial Association was established for people who have a care for the environment. Anyone can be buried at our burial ground irrespective of their personal views or beliefs. The old field name for our burial ground is Lower Heddon. Set high on a hill, with views of Dartmoor and overlooking the estuary of the River Yealm, Lower Heddon has been part of an arable farm since Saxon times.



In 2003 the ground was ploughed and harrowed before planting with grass and wild flower seed. Later that year we planted 1300 trees and shrubs, which provide the beginnings of our new woodland. Lower Heddon is not a traditional graveyard and we do not permit headstones. Instead, a small engraved memorial stone may be placed on a grave or where ashes are buried. We also encourage the planting of a native tree or shrub from a list of indigenous species, so that each burial can contribute towards the creation of

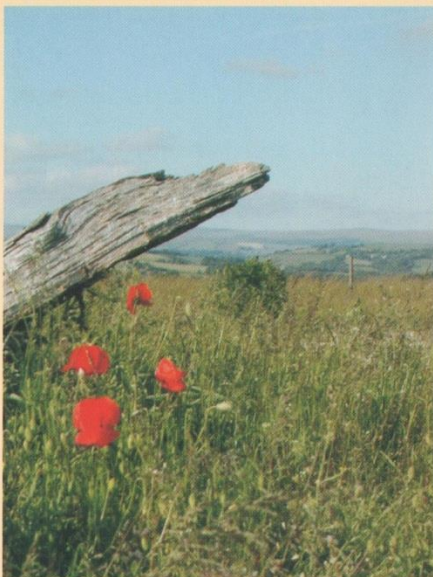
the new woodland. When all the trees have been planted the burial ground will be managed as woodland for ever.

Great care has been taken to preserve the natural environment so that the beauty of the meadow and developing woodland can be appreciated by all. For this reason we ask that coffins be made from materials that have been recycled or are from a renewable source, such as soft wood, willow or bamboo. These materials return to the soil as nature intended and do not impede the growth of seedlings or saplings that will be planted in memory of those who are buried here. We do ask that no embalming fluids or plastic of any kind be brought on site.

We have a flexible approach to funerals and members may use the services of a funeral director, minister of religion, independent celebrant, or make their own arrangements in consultation with us. You can choose to have an individual grave blessed. A leather-bound register will record each burial with full details.



Yealmpton Woodland Burial, near Plymouth is owned and managed by a local trust set up by the Parish Council. The site is on a hill with wonderful views of Dartmoor. It was fields so, with the trees planted around 2000 it is still a relatively immature site. You can choose a native tree and have shrubs, plants and a small plaque on the grave.



If you support our aims, you may join the Association, and gain the right to be buried at Lower Heddon. We also offer burial of ashes following cremation, scattering of ashes, and purchase of a memorial tree. We are a 'not for profit' community association and deliberately keep our running costs low, so that the cost of burial at Lower Heddon stays well below the cost of more traditional graveyards. In fact the cost of burial here is similar to the cost of cremation, but burial has a much lower impact on the environment.

Yealmpton Woodland Burial

Most people who decide to become a member of the Association have contacted us directly, but some have heard of us through a funeral director, when arranging a funeral or a pre-paid funeral plan. If you are interested in becoming a member, please call us and we can arrange a visit to Lower Heddon.

For more information please call
07739 806898

You may write to us at
Yealmpton Woodland Burial Association
Yealmpton Community Association
Stray Park
Yealmpton
Devon PL8 2HF
visit our web site at
www.woodlandburial.org.uk
or e mail us at
ywba@wrescombe.entadsl.com



Directions to Yealmpton Woodland Burial

We are on the Ordnance Survey map 202 square 56/50 Grid ref. Sx568 502

From Plymouth City Centre, take the A379 towards Kingsbridge. After leaving Plymouth and entering the South Hams, you will go through Brixton village. Carry on through to the other side of Brixton and about a mile further you see a sign for 'Woodland Burial Ground'. Turn right here (on the road, not into the first driveway which is for Kitley Hotel). Go down into the dip and over the little bridge and up the other side of the hill. On the way up the hill you go through woodland, then the road has a sharp left bend. After that bend, Lower Heddon is the second field on the left, exactly 1 mile from the sign.

From Exeter Take M5 then A38 towards Plymouth. Do not take the first turning off A38 for Yealmpton; take the second turning signposted Yealmpton and Smithaleigh. As you turn off the A38, go past the Little Chef then the Shell garage. Stop as a road joins from the right. Then turn left leaving the New Country motel on your right. Follow this lane to the village of Yealmpton (2 miles) then take A379 towards Plymouth through the village and out the other side. You will see a sign for 'Woodland Burial Ground'. Turn left and follow the directions above.

Yealmpton Woodland Burial Association is a member of the Association of Natural Burial Grounds

More on Yealmpton Woodland Burial

Dartmouth Woodland Burial at Longcross Cemetery – a fenced off area in the corner of the cemetery for woodland, where the grass will be left to grow to encourage wildlife, the graves can be marked with a small tablet and funeral directors are required to undertake the burial. Bio-degradable coffins and shrouds are permitted. Rights of burial last for 20 years.

Mole Valley Green Burial Ground, Woodhouse Farm, Queens Nympton, South Molton, Devon EX36 4JH. Brian and Jeanne Nicholas. 01769 574512

Based on an organic farm, the burial ground adjoins an old wood as is south facing over the Mole Valley. A native tree can be planted on the grave with a small plaque attached with the name – no other plaques are allowed. You can visit a grave at any time without notification.

Seaton Woodland Burial Ground. You can have a Woodland Burial at Seaton cemetery. Woodland burials allow a natural form of burial within an area especially dedicated to the creation of a flourishing woodland. Seaton cemetery offers views over the surrounding countryside. Those who have chosen a woodland burial will be contributing to the creation of a new sanctuary for wild plants, birds, butterflies and other wildlife.

The cemetery is managed to evolve in a way that will bring enjoyment to the local community and future generations. Only biodegradable coffins and adornments will be permitted allowing the area to remain as natural as possible. After an interment the area will be returned to grass. The Council will plant trees and shrubs at its discretion to enhance the woodland feel. Any tree planted will be a living memorial of great longevity. No individual markers or monuments will be allowed on any grave although there may be an opportunity to site benches within the woodland area onto which memorials may be inscribed.

The professional services of a grave digger must be employed for health and safety reasons. Only single body burials are permitted in the Woodlands Cemetery. An Exclusive Right of Burial Certificate may not be purchased for the Woodlands Cemetery.

To book a burial at any of these sites please call Heart & Soul Funerals on 01803 840779